



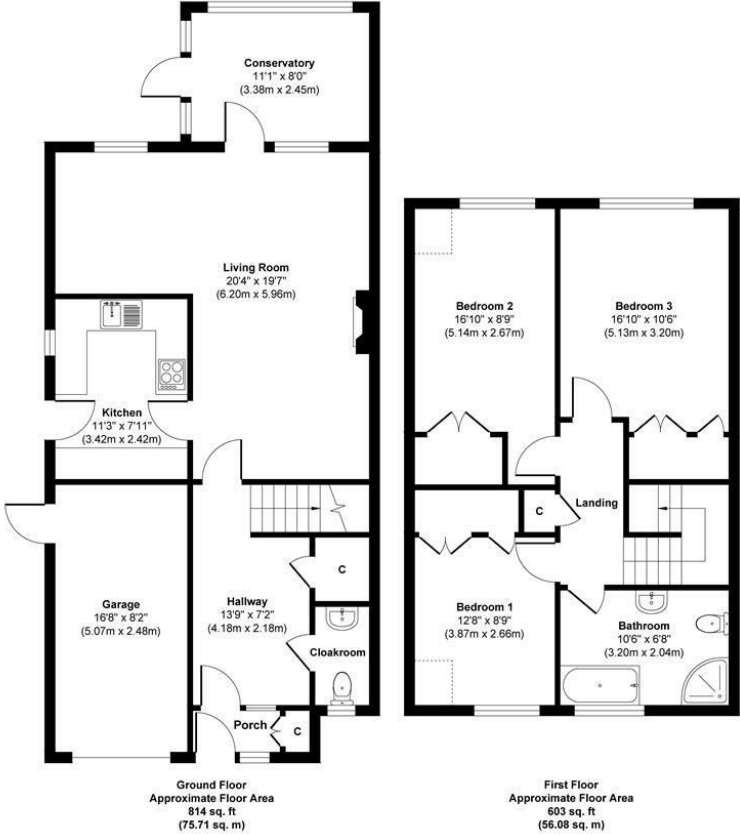
**3 Bed
House
located in**

Price Guide £429,995



briggs & mortimer
HYBRID

Cherry Drive



DIRECTIONS

CONTACT

20 Market Hill
Royston
SG89JG

E: sales@briggsandmortimer.co.uk
T: 01763242626
<https://www.briggsandmortimer.co.uk/>

Approx. Gross Internal Floor Area 1417 sq. ft / 131.79 sq. m
Illustration for identification purposes only, measurements are approximate, not to scale.

